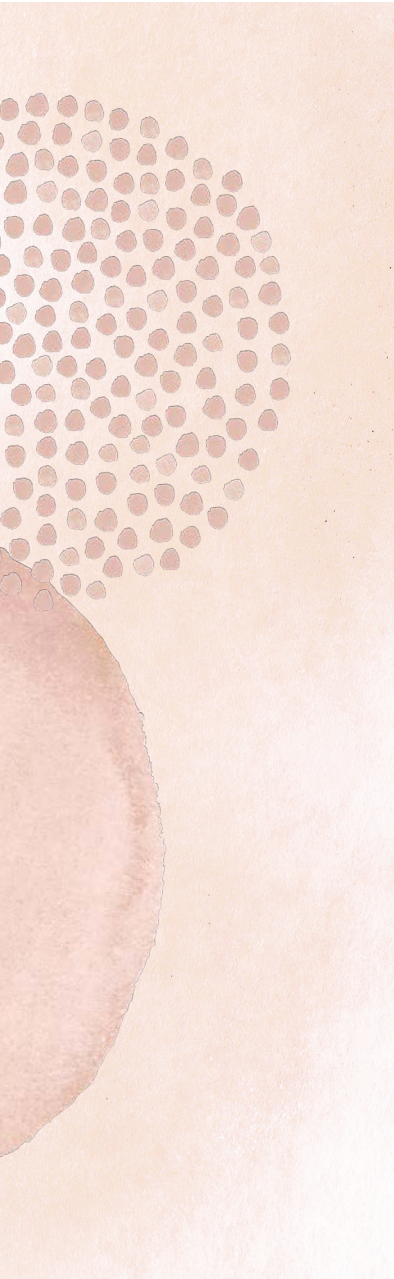


PRODUCT CATALOGUE
2024 COLLECTION



CONTENT MADE
IN SWITZERLAND

locherber®
SKINCARE

locherber®
SKINCARE

*** Confidential material for the point of sale, do not disclose to third parties ***



impress your beauty

Since 1972, Locherber skincare has been dedicated to beauty and personal care with Swiss-origin cosmetics, featuring natural formulations and advanced technologies. Locherber is not just a natural cosmetics brand, but a philosophy that involves mind, heart, and soul.

Locherber, with its natural principles, offers the awareness of always being the best version of yourself. Being LOCHERBER means listening to the signals of your body in harmony with the teachings of Mother Nature.

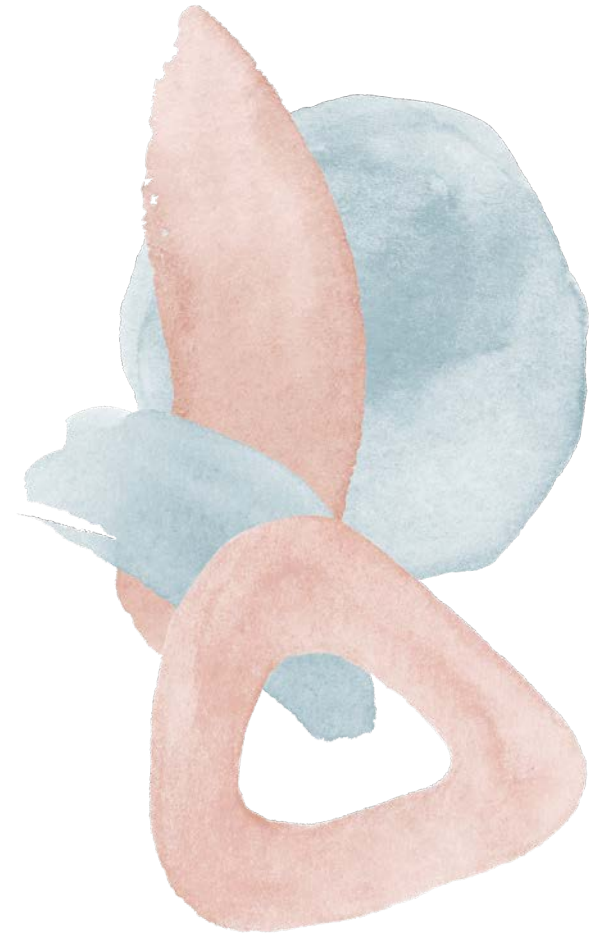
The prestigious and enveloping textures of Locherber cosmetics are essential elements to transform the skincare ritual into a moment of total relaxation and psychophysical well-being

Our rituals:

CLEANSE | HYDRATE | PROTECT | ILLUMINATE | PURIFY
| FIRMING | GOLD



moisturize





Intensive moisturizing Cream WITH CAMELIA AND EDELWEISS

50ML / 1.69 FL. OZ.

Restorative day and night treatment which provides essential moisture to keep dry and sensitive skin deeply nourished and hydrated. Thanks to its innovative natural substances and exclusive ingredients, it gives extra nourishment to dehydrated skin which appears smooth and healthy from the very first application. Immediately, complexion looks radiant and fresh and the skin feels reborn. It maintains optimal hydration levels.

HOW TO USE: apply morning and evening to cleansed face and neck with a gentle massage.

KEY INGREDIENTS.

Sweet almond oil, buckthorn and grapes, Vit. A and E, Shea Butter, Biosaccharides, Green Tea, edelweiss extract, Hyaluronic acid.

BENEFITS.

- Rich and creamy texture
- Promotes the protective barrier function of the skin
- Helps prevent the appearance of the first signs of aging
- Maintains an optimal level of hydration
- Can be used as an intensive treatment during periods when the skin appears particularly dehydrated, dull, and tired.



DNA-Cream day and night DEEP HYDRATION

50ML / 1.69 FL. OZ.

An advanced formula containing extracts of plant DNA which provides immediate relief to dry, dehydrated and tired-looking skin. The skin will instantly look smoother and deeply nourished. Suitable for all skin types, this non-greasy cream absorbs immediately.

HOW TO USE: morning and night apply to cleansed face and neck by massaging into the skin until fully absorbed.

KEY INGREDIENTS.

Red Algae extract, Gotu Kola Evening Primrose oil and Macadamia, Vitamin A and E, Wheat Germ extract (plant DNA), sunscreens.

BENEFITS.

- Day and night treatment
- For all skin types.
- The addition of **vitamin A and E** and **wheat germ extracts** provide the skin **elasticity** and **visibly firm it** from the very first applications.
- Red algae and centella asiatica, combined with the vegetable oils of Macadamia nut and Evening Primrose, create an extremely **effective treatment for tired and dehydrated skin.**



Regenerating and Moisturizing emulsion WITH BUDDLEJA DAVIDII EXTRACTS

50ML / 1.69 FL. OZ.

A unique regenerating serum enhanced with Hyaluronic Acid for an immediate beauty effect. Suitable for all skin types, it transforms the appearance of your complexion, leaving the skin velvety soft, supple and regenerated. A treatment to combat the alteration of stressed skin increasing its natural defences in all weather and environmental conditions and reducing the signs of ageing.

HOW TO USE: apply each morning to cleansed face and neck as a daily treatment or as occasional intensive treatment.

KEY INGREDIENTS.

Hyaluronic Acid, Red Algae, Buddleja davidii, Thyme and Cucumber extracts, Vit. A and E, Bisabolol.

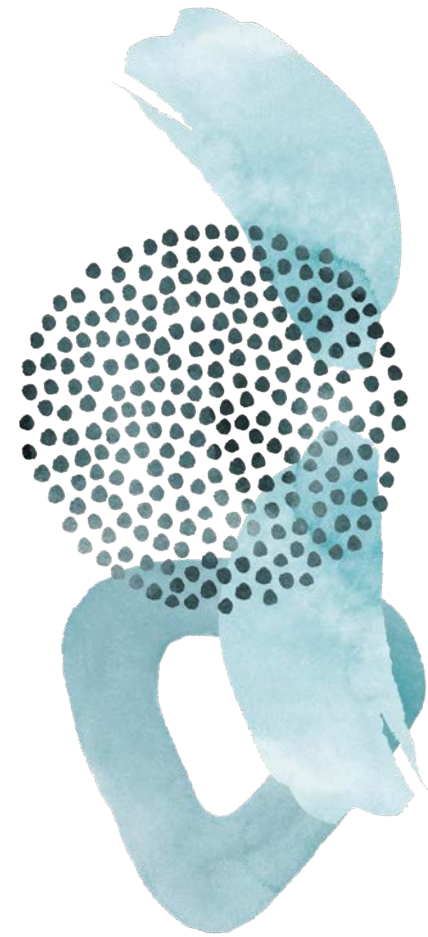
The extract of Buddleja davidii (butterfly bush) and Thymus vulgaris (thyme), in synergy, has been carefully selected for its ability to combat external pollution, which increases the aging process of the epidermal cells.

BENEFITS.

- Extra-smoothing even in extreme conditions.
- Penetrates immediately.
- Immediate feeling of well-being.
- Reactivates the radiance of the complexion by restoring the skin's supporting tissues.



protect





Essential Eye Gel BAGS AND DARK CIRCLES

30ML / 1 FL. OZ.

Gel cream with fresh effect, for reparation of under-eye circles, relief from puffiness and reduced signs of fatigue. Swelling decreases and the eye contour becomes toned, firm and luminous.

HOW TO USE: apply morning and evening using the fingertips, gently tapping the gel on the eye contour. Store in refrigerator for a cooler effect.

KEY INGREDIENTS. extracts of Ashwood, Scutellaria, Rhodiola, Blueberry.

Thanks to its bioactive complex, rich in aesculin and frassin, it stimulates microcirculation, **Vit. B3** and organic silicon play an effective venotonic action, the extract of **Cranberry** prevents capillary fragility, while the new phyto-tonic complex extracted from **Rodiola** and **Scutellaria**, stimulates beta-endorfine synthesis producing a sense of inner well-being and a feeling of relaxation that is reflected in an immediate and visible result.

BENEFITS.

- Helps to reduce puffiness and dark circles.
- Tones and firms the skin around the eyes.
- Revitalizes and refreshes, alleviating signs of fatigue.
- Provides intense hydration.
- Excellent makeup base.



Mellow Cream SOOTHING & PROTECTIVE

50ML / 1.69 FL. OZ.

Excellent protection against external agents and further strengthening of the skin's natural defence. The skin looks renewed and the complexion is bright and even from the very first applications. It is a perfect make-up base.

HOW TO USE: apply each morning onto cleansed face and neck with a light massage.

KEY INGREDIENTS.
Mallow extract.

BENEFITS.

- Excellent revitalizing, emollient, and soothing treatment.
- Effectively stimulates the natural processes that maintain long-lasting skin hydration balance.
- Excellent makeup base.



City Cream

WITH GINKGO BILOBA & ALOE VERA

50ML / 1.69 FL. OZ.

A special formula with sunscreens to protect the skin from both the sun's harmful rays and pollution. This cream combats the negative effects of free radicals and creates a protective barrier against external agents.

HOW TO USE: gently massage into perfectly cleansed skin in the morning, before applying make-up.

KEY INGREDIENTS.

Hypericum, Ginkgo Biloba, Aloe Vera, sunscreen filters.

BENEFITS.

- An ideal day cream during periods of stress, travel or sports activity, or periods of prolonged exposure to environmental factors, as it creates a protective film on the skin without hindering its ability to breathe.
- Helps to restore firmness, elasticity, vitality, and tone to the skin tissue.



Cream for sensitive skin

WITH ESCIN AND CHAMOMILE

50ML / 1.69 FL. OZ.

Sunlight, temperature fluctuations, overheated environments, air conditioning and air pollution are the main enemies and leading causes of imperfections, particularly when the skin is sensitive, thin, pale and delicate.

Applying the cream creates a protective barrier, reinforcing the skin's defense system during overnight rest.

HOW TO USE: To be used both as a cream, applying it in the morning and evening on a clean face, or as a soothing mask, applying a larger amount on the more affected areas, especially in the evening. Rinse off after approximately 20-30 minutes or leave it on overnight and rinse it off the following morning.

KEY INGREDIENTS.

Horse chestnut extract, mallow, chamomile, sandalwood essential oils and ylang-ylang.

BENEFITS.

- The natural extracts of Horse Chestnut, Mallow, and essential oils work synergistically, stimulating peripheral microcirculation of the capillaries and enhancing their resistance to external agents, resulting in a firm, healthy, and hydrated skin.



glow





Brightening Cream WITH TRANEXAMIC ACID

50ML / 1.69 FL. OZ.

Face cream designed to keep the skin looking youthful and reduce dark spots. A light, pearlescent texture with tranexamic acid and effective brightening properties, plant stem cells to plump wrinkles and shea butter to nourish and soften the skin.

HOW TO USE: apply AM/PM to cleansed face and neck massaging until fully absorbed.

KEY INGREDIENTS.

Ash Tree extract, Scutellaria extract, Rhodiola extract, Blackberry extract. 83% natural ingredients. Fragrance free.

BENEFITS.

- **Vitamin B3:** a multifunctional active ingredient that creates a protective barrier, helping the skin preserve its hydration.
- **Castor Oil:** a highly emollient active ingredient that makes the skin soft and hydrated.
- **Shea Butter:** promotes cellular regeneration, restructuring, and softening of the skin.
- **Coffee Stem Cells:** Coffea Bengalensis is a specific type of coffee that is caffeine-free. The stem cells have nourishing, anti-wrinkle, energizing, and antioxidant properties.
- **Arctic Pearl Pigment:** illuminating pigments with a silver and "icy" effect have been added to the formulation to give the skin a luminous and radiant look.
- **Vita Genesis White:** a special peptide derived from the root of "Brassica Rapa" that helps reduce melanin concentration, improving the appearance of the skin and promoting an even complexion.



TRANEXAMIC ACID

Tranexamic acid has been studied for its ability to reduce the production and deposition of melanin, which can help in treating various forms of hyperpigmentation, including melasma, post-inflammatory hyperpigmentation, and age spots. It inhibits the activation of melanocytes, the cells responsible for producing melanin, thereby reducing excessive pigmentation. A natural and gentle skin lightener that can restore skin damaged by UVA/UVB rays, pollution, or other environmental factors.



firming





B.T.Y.® INTENSIVE REPULPING SERUM

30ML / 1 FL. OZ.

A revolutionary anti-ageing plant complex. B.T.Y. strengthens the elasticity of the skin, imparting astonishing suppleness, relaxation and inherent firmness from the first applications. Helps reduce signs of ageing.

AMAZING IMMEDIATE RESULTS.

HOW TO USE: apply evenly on cleansed skin.

KEY INGREDIENTS.

Argireline®, plant extracts of red seaweed, Helichrysum, saxifrage, sweet orange, Imperata, and bisabolol, carrageenans and sun filters.

BENEFITS.

- **Plumping action** - Thanks to Argireline®, a unique ingredient derived from plant-based molecules that reduces muscle and microcutaneous tension from the first applications. It prevents the emergence of new expression wrinkles caused by facial movements.
- **Stimulating action** - Thanks to its natural extracts that deeply regenerate and strengthen the epidermis, providing intense hydration.
- **Elasticizing Action** - Thanks to the combination of moisturizing and protective agents such as Bisabolol and Sweet Orange that revitalize and protect the skin.



B.T.Y.® INTENSIVE REPAIR CREAM

30ML / 1 FL. OZ.

A revolutionary biotechnological anti-ageing plant complex. Thanks to the B.T.Y. complex, the skin will appear astonishingly more compact and elastic, filling existing wrinkles from the first applications.

HOW TO USE: apply morning and evening on clean skin, massaging gently on the forehead and eye contour.

KEY INGREDIENTS.

Argireline®, extracts of Imperata, Helichrysum, Bisabolol.

BENEFITS.

- **Plumping action** - Thanks to the presence of Argireline®, a patented ingredient based on molecules of vegetal extraction that reduces muscular and micro-cutaneous tension without side effects. It also helps to prevent lines and wrinkles produced by facial expressions.
- **Repairing Action** - Thanks to its natural extracts that nourish and protect the skin from external aggressors and free radicals, to Bisabolol with its remarkable anti-inflammatory and soothing properties, and to the sun filters.
- **Azione Elasticizzante** - Deep and long lasting hydration thanks to Apricot stone Oil which leaves the skin soft, smooth and compact.



Lifting Effect Cream WITH BORAGE OIL

50ML / 1.69 FL. OZ.

The aging process changes the structure of your skin. This extraordinary anti-aging formula for mature skin is specifically formulated to smooth and tone up the face, neck, décolletage and inner arms which, with time, lose elasticity and need intensive remodeling treatments. It contains UVA and UVB filters

HOW TO USE: Apply onto cleansed skin by massaging the face, neck, décolletage and inner arms until fully absorbed

KEY INGREDIENTS. Camomile extracts, Shea Butter, Borage oil, D-Panthenol, sunscreens.

BENEFITS.

- Effetto lifting, thanks to the natural derivatives of carbon hydrates.
- A polysaccharide rich in fucose (a sugar derived from psychosensory plants) that gives extraordinary vitality, freshness, comfort, and hydration to the skin.
- Suitable for even the most sensitive and prone-to-redness skin, thanks to Camomile extracts and Red Algae Mucilages.
- Shea butter and sodium hyaluronate to maintain deep and long-lasting hydration over time.
- The softening and soothing properties of brown algae and laminaria provide an immune-protective and skin defense action.



Hypnotic Viper Cream SMOOTHING

30ML / 1 FL. OZ.

This treatment involves a combination of peptide, that simulates viper venom effect, and hyaluronic acid providing a smoothing recompacting effect. Shea butter, Rosa Mosqueta oil and Plantago natural extracts play an important role in skin generation and in stimulating new collagen production to maintain youthful skin.

HOW TO USE: apply every morning and evening onto face and neck with light ascendant massage.

KEY INGREDIENTS.

hyaluronic acid, Dogrose, Shea butter, Aloe, Plantago.

BENEFITS.

- Promotes the preservation of skin elasticity and diminishes the appearance of wrinkles.



Nutri Age Cream WITH PRIMROSE OIL

30ML / 1 FL. OZ.

Intensely moisturizing formula, specially designed for hydrating and deeply nourishing even the driest skin. From the very first applications it leaves skin wonderfully soft, smooth and supple.

HOW TO USE: In the evening, apply to face and neck using a gentle massage after thorough cleansing. Oil-free formula, instantly absorbs.

KEY INGREDIENTS.

sweet Almond oil, Macadamia and Sunflower oil, Evening Primrose Oil and Borage oil, Beech buds extract, Shea Butter, Vit. A and E.

BENEFITS.

- Nourishes and firms the skin, providing deep hydration and toning the skin tissues, thanks to the active elements found in **Macadamia nut oil, Evening Primrose oil, Borage oil, and plant extracts.**
- Combats skin dryness and helps prevent the formation of premature wrinkles.



Firming Eye contour Cream WITH MACADAMIA NUT & SWEET ALMOND

30ML / 1 FL. OZ.

Provides a protective and toning action to prevent and diminish the signs of expression that can dull the freshness of the gaze. Concentrated oil-free formula, absorbs quickly.

HOW TO USE: apply in the morning and evening to clean skin, gently tapping from the inner to the outer corner of the eye, then continue upward.

KEY INGREDIENTS.

Extracts of macadamia nut, sweet almond and lime tree.

BENEFITS.

- Creamy, lightweight, easy to apply, and enriched with plant-based active ingredients.
- Ideal for even the most delicate skin tissues
- The effective moisturizing, nourishing, regenerating, soothing, and toning power of its active ingredients helps to reduce and counteract wrinkles and expression lines.



purify



Purifying cleanser Gel

CON ESTRATTI DI SALVIA E ROSMARINO

100ML / 3.38 FL. OZ.

A special purifying treatment for both oily and impure skins. It sweeps away impurities and excess sebum, dirt and residual make-up. Its natural ingredients ensure a deep cleansing of the epidermis without causing any irritation. The skin looks immediately silky-soft and smooth.

HOW TO USE: gently massage onto face avoiding the eye area. Allow it to act for 1-2 minutes before rinsing it off. It does not dry out the skin and leaves no residue.

KEY INGREDIENTS.

Hydrolyzed Wheat Protein, Rosemary and Sage extracts, Peppermint, Red Thyme and Sage Essential Oils.

BENEFITS.

- When used daily, it performs a softening and restorative action, purifying and soothing the skin. It also provides toning, antiseptic, and regulating properties.



Cream for Combination Skin

WITH WITCH HAZEL

50ML / 1.69 FL. OZ.

A Specific T-Zone treatment (forehead, nose, chin) which, thanks to its natural ingredients, combats excess of sebum and environmental factors such as humidity and perspiration. Its light texture guarantees a long lasting effect leaving the skin soft, purified and hydrated.

HOW TO USE: apply in the morning onto cleansed skin focusing on the T-zone. Perfect as a make-up base.

KEY INGREDIENTS.

Sebum-regulator agents, Laminaria Digitata, Witch Hazel, Panthenol, sunscreens.

BENEFITS.

- Does not dry out the skin.
- With dulling anti-shine effects.
- The presence **Vitamin E** and of **UVA** and **UVB filters** offer prolonged protection against harmful solar radiation, helping to prevent skin aging.
- Extract of **Laminaria Digitata** algae has purifying and remineralizing properties.
- **Witch Hazel** extract is astringent, soothing, and regenerating.
- **Panthenol** stimulates cellular renewal.



Purifying Cream

WITH SAGE AND THYME EXTRACTS

50ML / 1.69 FL. OZ.

This innovative formula, containing natural ingredients, combats against the build up of excess sebum and impurities unclogging skin pores. It acts in depth and tones up the skin, giving it a fresh and luminous appearance.

HOW TO USE: apply daily onto clean skin, insisting on the affected areas. Continue the treatment for clearer skin

KEY INGREDIENTS

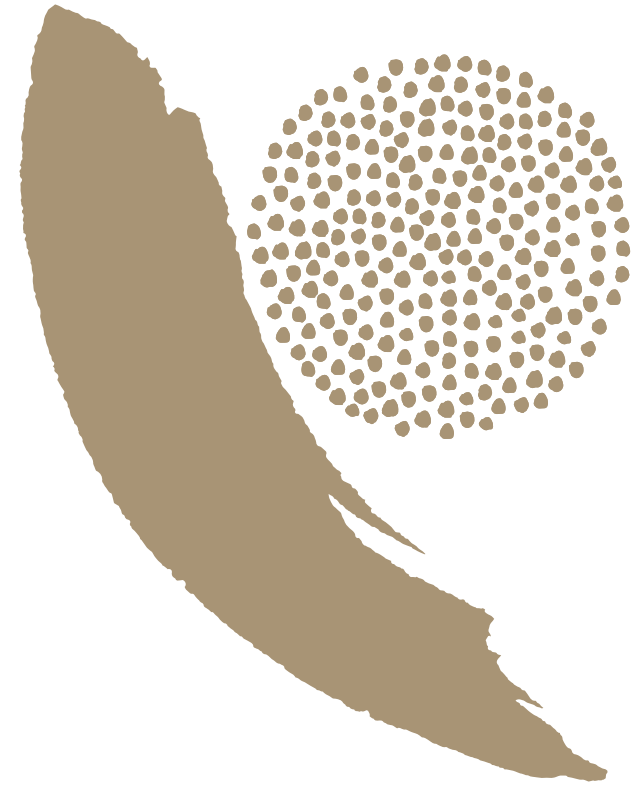
Saccharin Laminaria Extract, Rosemary extract, Sage, Lavender Oil, Peppermint, Thyme.

BENEFITS.

- Contrast excessive sebum production.
- Assists in pore cleansing.



gold





Anti-aging Cream GOLD 24K

50ML / 1.69 FL. OZ.

Gold 24K Anti-aging Cream harnesses the power of gold creating a flawless texture giving the skin immediate silky and nourishing results. It is created to redefine the contours of the facial oval and endows the skin with brightness and youth, promoting elasticity and firmness.

HOW TO USE: Gently apply to the face and neck, massaging for a few moments. Suitable for day and night use.

KEY INGREDIENTS & BENEFITS.

Gold-Peptide: A cutting-edge tripeptide cleverly bio-conjugated with gold nanoparticles. The gold particles transport the peptide, stimulating collagen fiber production and inhibiting its degradation.

Squalane: Derived from natural hydrogenation of olive oil, it prevents water loss and helps maintain the skin's natural elasticity.

Shea Butter: Possesses regenerative properties for cellular renewal.

Pro-vitamin B5: Helps restore and maintain the skin's natural moisture.

Ginseng Extract: Rich in vitamins and terpenoids, it stimulates, oxygenates, and improves skin elasticity.

Aloe Vera Extract: Forms a protective film on the skin.

Vitamin E Acetate: Enhances skin radiance and tones the skin tissues.



Intensive anti-aging Serum GOLD 24K

30ML / 1 FL. OZ.

Intensive serum with targeted action on the most vulnerable areas of the skin. It promotes hydration, improves and revitalizes the skin tissue; its active components help to counteract the first signs of ageing, leaving a glowing and firm skin.

HOW TO USE: apply a few drops of serum to cleansed face and neck and distribute evenly with your fingers.

KEY INGREDIENTS & BENEFITS.

• Exclusive combination of **Colloidal Gold** and plant-based ingredients, such as **Cynara Scolymus**, for a detoxifying and rebalancing action.

• **Trifolium pratense**, whose functional effectiveness is attributed to its many active compounds: isoflavonoids, isoflavones, and coumarin derivatives.

• **Pine Bark Extract:** capable of stimulating the biosynthesis of the main structural proteins of the skin (collagen and elastin).

• **Glycyrrhiza glabra**, containing licorice root extract as its main active ingredient, known for its soothing effects and SOD-like action.

• **Hyaluronic Acid** also contributes to maintaining skin resilience and firmness by stimulating new collagen formation.

• **Peptide Complex** capable of stimulating the synthesis of proteoglycans, which play a key role in tissue anchoring. The skin appears more plumped and toned.



Eye Contour cream GOLD 24K

30ML / 1 FL. OZ.

Infused with gold particles, it enhances radiance and revitalizes the delicate and sensitive skin around the eye area. It improves skin tone, giving it a luminous glow.

HOW TO USE: distendere un velo di crema sul contorno occhi massaggiando leggermente fino a completo assorbimento.

KEY INGREDIENTS.

gold particles, caffeine and soy extract.

BENEFITS.

• A luminous visage thanks to the action of **Aura-28 Peptide**. This tripeptide, cleverly conjugated with gold particles, transfers its properties to the skin, effectively balancing MMP9 and stimulating collagen production. This harmonious action brings forth noticeable improvements in skin elasticity, enhanced hydration, and a golden radiance to the delicate eye area.

• **Caffeine**, known for its detoxifying qualities, helps reduce fat accumulation and diminish puffiness caused by it.

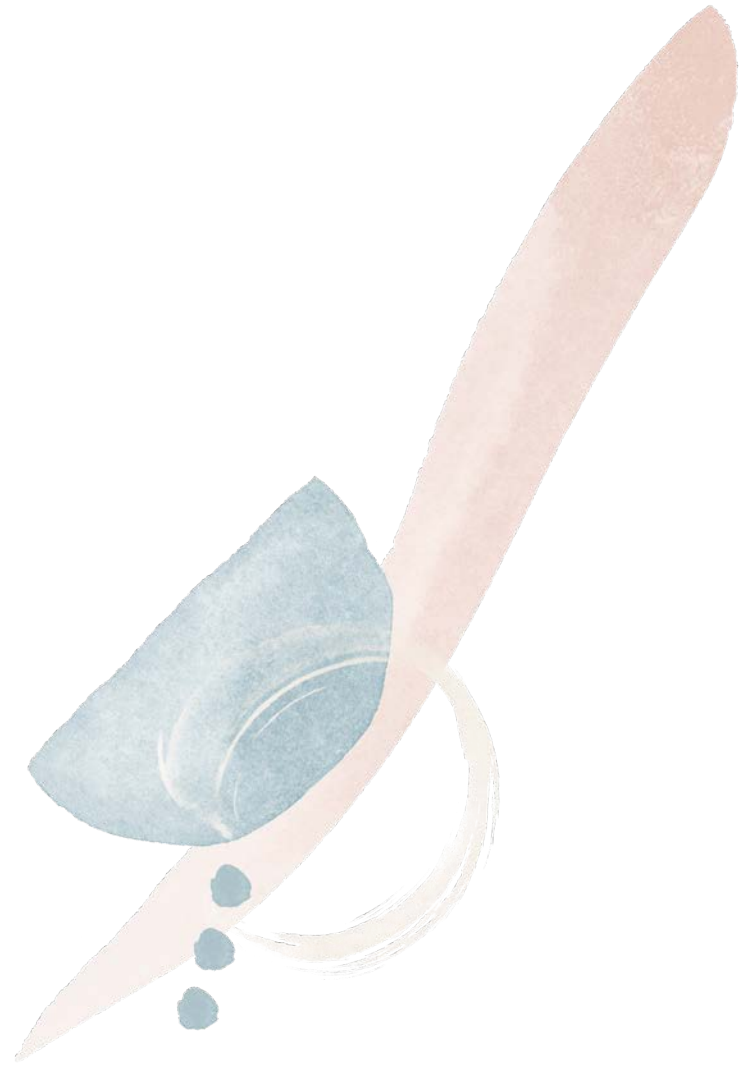
• **Shea butter** tones and enhances the skin's elasticity.

• **Vitamin E** illuminates, moisturizes, and revitalizes the skin, thanks to its potent antioxidant action.

• **Vitamin B3** aids in reducing pigmentation.



cleanse





Face Peeling scrub WITH HIBISCUS AND ROSEHIP

30ML / 1 FL. OZ.

A gentle and effective exfoliating cream enriched with extracts of Hibiscus, Rosehip oil, and volcanic sand, designed to deeply cleanse the skin. It effectively removes impurities, unclogs pores, and eliminates all traces of make-up without causing any irritation. The skin will immediately appear luminous, smooth, and ready for further treatments.

HOW TO USE: Emulsify a small amount of the product on damp face two to three times a week. Focus on the T-zone and massage with gentle circular motions. Then, rinse thoroughly.

KEY INGREDIENTS.
Hibiscus extracts, Dogrose oil, Volcanic sand, Orange, Vit.C, Bisabolol.

BENEFITS.

- Helps regenerate skin tissues and stimulate collagen synthesis.
- Softens, moisturizes, and maintains skin elasticity.
- Contributes to a brighter, more elastic, and toned skin.
- Helps to gently eliminate dead cells and renew them.



Cleansing Tonic Lotion WITH ORANGE BLOSSOM

150ML / 5.07 FL. OZ.

This innovative "two-in-one" formula provides both toning and cleansing benefits. In the morning, it effectively removes dead cells and prepares the skin for make-up application. In the evening, it thoroughly cleanses and removes impurities, including make-up residue, preparing the skin for the nourishing night cream. With regular use, the skin will appear luminous, fresh, toned, and deeply hydrated.

HOW TO USE: Using a cotton pad soaked in the lotion, thoroughly cleanse face and neck, removing traces of make-up and impurities. The skin, now clean and toned, is ready for further treatments.

KEY INGREDIENTS.
Rose, Orange Blossom and Cornflowers Distillates; Sandalwood and Orange essential oils.

BENEFITS.

- Does not dry out the skin.
- Two-in-one formula.
- Non-greasy formula.



Liquid soap WITH WHEY AND CHLOROPHYLL

250ML / 8.45 FL. OZ.

A highly gentle soap for hands and body, enriched with whey and chlorophyll, and infused with an invigorating thyme and rosemary scent. It deeply cleanses while respecting even the most sensitive and delicate skin.

HOW TO USE.

- In the bathtub: add approximately 20 ml of the liquid to the bathwater.
- In the shower: apply regularly with circular motions all over the body. Leave it on for a few moments before rinsing thoroughly.

KEY INGREDIENTS.

Whey, Milk Protein, Chlorophyll.
Fragrance: Extracts of herbal essential oils.
Color: It does not contain any colorants. Its color is solely derived from the natural color of the raw materials.

BENEFITS.

- Helps the skin regain its natural well-being and elasticity.
- Provides a pleasant sensation of freshness to the body, restoring the skin's natural radiance and softness.



Fluid cleanser for personal hygiene WITH WHEY PROTEINS

250ML / 8.45 FL. OZ.

Specially formulated with ingredients considered to be among the purest, the most neutral, and suitable for the intimate areas, which are the most delicate parts of our body. Purifying and deodorizing, this lotion guarantees a non-aggressive and delicate cleansing for even the most sensitive and irritation-prone skins. Freshness and well-being all day long.

HOW TO USE: use with water, without adding other soaps/cleansers. Gently massage, then rinse off thoroughly. For all skin types. External use.

KEY INGREDIENTS.

Whey proteins and lactic acid.
Color: It does not contain any colorants. Its color is solely derived from the natural color of the raw materials.

BENEFITS.

- Purifying and deodorizing, this cleanser provides a non-aggressive and gentle cleansing experience, even for the most sensitive and irritation-prone skin.
- Feeling of freshness and well-being throughout the day.
- Recommended for both feminine and masculine intimate hygiene.



deodorize





Spray Deodorant WITH PEPPERMINT

100ML / 3.38 FL. OZ.

Fresh and mild formula made with natural ingredients to donate a deodorizing, purifying and calming effect throughout the day even to the most delicate skin. Natural fragrance.

HOW TO USE: Use every day. Spray on dry skin in the morning and after every bath or shower. Ideal after hairremoval

KEY INGREDIENTS.

Iceland Moss extract, Sage, Witch-hazel essential oils, Sandalwood, Peppermint.

BENEFITS.

- Helps prevent unpleasant body odor caused by perspiration.
- So delicate it can also be used after hair-removal.
- Great for soothing insect bites.





RISPLENDI DI BELLEZZA.

Let your beauty shine.



*** Confidential material for the point of sale, do not disclose to third parties ***



Eye contour Cream INSTANT GLOW

15ML / 0.5 FL. OZ.

Eye cream infused with Poppy extract and Vitamin C for luminous skin. Featuring a refreshing texture and enriched with illuminating pigments, this eye contour gel is the ultimate solution for achieving a consistently bright and rejuvenated appearance. It effectively combats dark circles, puffiness, signs of fatigue, and the harmful effects of blue light, which the delicate eye area is constantly exposed to.

HOW TO USE: Apply morning and evening around the eye area.

KEY INGREDIENTS & BENEFITS.

- **Blue-Light Fighter (%)**: Derived from non-fermented cocoa seeds and rich in peptides, saccharides, and polyphenols, this active ingredient helps the skin counteract damage from blue light.
- **Poppy Extract (%)**: Acts against bags and dark circles by stimulating microcirculation. It also prevents loss of tone and improves elasticity and firmness.
- **Fig Extract (%)**: Obtained from the stem cells of Ficus Carica, this innovative active ingredient combats the negative effects of stress on the skin, restoring its vitality and radiance.
- **Vitamin C**: With a strong antioxidant action, it helps to counteract and prevent wrinkles and signs of aging. By stimulating collagen synthesis, it improves the skin's tone and elasticity.



Detox-brightening face Cream WITH WHITE TEA EXTRACT

50ML / 1.69 FL. OZ.

With this unique SPA treatment the skin is moisturized and protected from free radicals and external polluting agents. Dark spots and imperfections are visibly reduced thanks to white tea extract, vitamin B3, meadowfoam seed, natural peptides and probiotics.

HOW TO USE: apply morning and evening to a perfectly clean face. Avoid the eye area.

KEY INGREDIENTS & BENEFITS.

- **Meadowfoam Seed and Shea Butter** - An exceptional combination for an unprecedented softness effect.
- **Vitamin B3** - Stimulates collagen production while reducing blemishes and imperfections.
- **Vita Genesis White** - Peptide that promotes an illuminating effect on the skin.
- **Probiotics** - Soy, Ginseng, and Rice combined to protect your skin from external aggressors.
- **White Snow Lichen** - Lichen that grows in high mountains, providing a natural barrier against visible and invisible damage caused by air pollution.



Multi-action Gel Treatment WITH COFFEE & GINGER ROOT

125ML / 4.22 FL. OZ.

A multi-action gel treatment infused with antioxidant-rich coffee powder and ginger root, known for their purifying benefits. Upon contact with water, it transforms into a luminous milk, leaving the skin regenerated, youthful, and radiant. Enriched with nourishing sunflower seed oil, Vitamin E, and probiotics derived from natural extracts, it provides comprehensive care to the skin.

HOW TO USE: massage onto face avoiding the eye and lip contour. Leave on skin for a few seconds until feeling a warm sensation that stimulates the microcirculation. Rinse off the gel with lukewarm water and see it transforming into a renewing and brightening milk. Rinse off until face is completely clean.

KEY INGREDIENTS & BENEFITS.

- **Organically grown Ginger root** - stimulates the circulation and gives a pleasant warm sensation.
- **Vita Genesis White** - peptide that illuminate your skin tone.
- **Probiotics** - soy, ginseng and rice combine to protect the skin from external agents.
- **Coffee powder** - for a delicate purifying effect.



locherber®
MAKE - UP





**LASH &
BROW**
NUTRI-BOOSTER

LASH&BROW NUTRI-BOOSTER

5.5ML / 0.18 FL. OZ.

Lash&BROW is a 99% naturally formulated serum that strengthens and volumizes lashes and eyebrows. Scientifically tested to target the signs of aging and stress on lashes and eyebrows. Enriched with a synergistic combination of biomimetic peptides and red clover flower extract to promote fuller, thicker, and healthier lashes and eyebrows. It also helps to strengthen and repair them from within to reduce breakage.

HOW TO USE: apply the product on the base of clean lashes twice a day, morning and evening. For better results use it for at least 8 weeks. It can also be applied on the eyebrows. Apply make-up once dried. Lash & brow absorbs quickly without leaving residues. For external use only. Avoid direct contact with eyes. Keep out of reach of children. Store in a cool, dry place.

KEY INGREDIENTS. Red clover flower extract, hydrolyzed soy proteins.

BENEFITS.

- Hydrolyzed soy protein. A regenerating/revitalizing agent. By increasing energetic potential, it stimulates cell renewal and makes hair more resistant to environmental damage.
- Synergistic combination of biomimetic peptide with red clover flower extract to prevent eyelash and eyebrow loss, stimulate growth and maintain health of eyelashes and eyebrows follicles.



STRONGER, THICKER, FULLER, HEALTHIER LOOK



RISULTATI CIGLIA DOPO 4 SETTIMANE:

Lunghezza +5,2%* - Diametro +6,1%* - Volume +18,6%*

*Test clinico strumentale, 20 soggetti, 2 applicazioni al giorno

RISULTATI CIGLIA DOPO 8 SETTIMANE:

Lunghezza +9,4%* - Diametro +8,4%* - Volume +28,8%*

*Test clinico strumentale, 20 soggetti, 2 applicazioni al giorno

100% dei soggetti ha ciglia e sopracciglia più forti, più folte, più voluminose e dall'aspetto più sano.

Prettier Eyelashes and Eyebrows.
without making it up!

Eyeliner PENCIL

1,18G / 0.04 oz.

An extremely easy-to-use eyeliner pencil that glides smoothly on the eyes and can also be used as kajal to darken the inner or outer rim, enhancing the beauty of the gaze and intensifying its depth. Presented in a 3-piece packaging. Dermatologically tested, Nickel tested.

HOW TO USE: to achieve an intense look, the product can be used on the lower eyelid, inside or outside the eye, and as eyeliner on the upper eyelid, with or without eyeshadow.

KEY INGREDIENTS.
Castor Oil, Carnauba Wax, Beeswax.

BENEFITS.
Its advanced formula ensures easy application and long-lasting hold.

AVAILABLE IN:

● PE1 - Black



Foundation SOFT

35ML / 1.18 FL. OZ.

The gentle and covering fluid provides an immediate natural and even effect to the face. Enriched with Irwinol, it hydrates and nourishes the epidermis, reducing imperfections caused by the first signs of aging. Long-lasting coverage, non-greasy formula. With UV SPF 15 sun filter. Dermatologically tested, Nickel tested.

HOW TO USE: seconda delle preferenze, applicare il fondotinta con la punta delle dita o con una spugnetta a piccoli tocchi sulle guance, fronte e mento, sfumando bene verso l'esterno, in modo uniforme. Uso esterno.

KEY INGREDIENTS. Irwinol (wild Mango butter), UV SPF 15 sun filter.

BENEFITS.
• Its formula enriched with Irwinol (wild Mango butter) moisturizes and nourishes the epidermis, minimizing imperfections caused by the first signs of aging.

AVAILABLE IN:

● FT1 - Desert Sand

● FT2 - Light Tan



Mascara EXTREME BLACK

10.5ML / 0.35 FL. OZ.

Ultra-performing volumizing mascara, featuring an innovative formula that is luxuriously rich and creamy. It effortlessly glides onto the lashes, coating them from root to tip, for ultimate protection, enhancement, and intensified gaze with a striking burst of color. Dermatologically tested, Nickel tested

HOW TO USE: Apply the product evenly along the entire length of the lashes, from the root to the tip. Repeat the application according to the desired intensity of the result. For external use only.

KEY INGREDIENTS.
Carnauba Wax, Candelilla Wax, Rice Bran Wax, Pro-Vitamin B5.

BENEFITS.
• Rich and creamy formula.
• It effortlessly glides onto the lashes, coating them from root to tip

AVAILABLE IN:

● MS1 - Black



Mascara ULTRA VOLUME

12ML / 0.4 FL. OZ.

A new ultra-performance formulation that amplifies lash volume and defines them for a stunning look. The specially designed silicone brush effortlessly captures every single lash, even the tiniest ones. Dermatologically tested, Nickel tested

HOW TO USE: apply the product evenly along the entire length of the lashes, from root to tip.

KEY INGREDIENTS.
Carnauba wax acts as a water-resistant agent, creating a protective film. It features a delicate and pleasant natural Acacia scent.

BENEFITS.
• Its conical and slim shape guarantees easy and quick application, and its flexibility allows intensifying the look with each stroke.
• The final result is intensely black, perfectly elongated, and volumized lashes without any residue or smudges.
• The creamy and lightweight texture imparts a volumizing effect to the lashes. It exhibits good water resistance. It boasts an intense carbon black color and long-lasting wear.





LIP BALM

TRIPLE-ACTION LIP TREATMENT

4.5ML / 0.15 FL. OZ.

Lip Balm is a **triple-action lip treatment**: **Emollient**, thanks to Shea Butter and Rice Wax. **Anti-aging**, with the presence of Hyaluronic Acid that fills and reduces wrinkles by penetrating the deeper layers of the skin, increasing hydration and firmness. **Anti-inflammatory**, soothing, and healing, providing skin repair benefits, especially in the delicate lip area, thanks to the presence of Alpha Bisabolol, an essential oil derived from chamomile. The nourishment of the lips is further enhanced by the natural emollient elements of Cocoa Butter, Beeswax, and Sweet Almond Oil. **Dermatologically tested, Nickel tested.**

HOW TO USE: gently apply Lip Balm to the lips, and if necessary, repeat the process several times a day to ensure an even more effective result.

KEY INGREDIENTS. Hyaluronic Acid, Sweet Almond Oil, Oryza Sativa Oil, Octyldodecyl, Tocopherol, UVB Filter, Shea Butter, Vitamin A and E, Alpha Bisabolol, Theobroma Cacao (Cocoa Butter).

BENEFITS.

- Nourishing: nourishes and protects the lips.
- Restructuring: with its active ingredients, it helps to restructure the lip mucosa.
- Soothing: provides an immediate feeling of comfort.



Creamy Concealer

CC2

2.5ML / 0.08 FL. OZ.

Innovative concealer with a lightweight and soft texture to conceal skin imperfections such as blemishes, redness, and dark circles. **Dermatologically tested, Nickel tested.**

HOW TO USE: apply a small amount of product to the desired area and gently tap with your fingertips until the color blends seamlessly with the skin. Continue with your regular makeup routine.

KEY INGREDIENTS.
Raspberry Leaf Extract

BENEFITS.

- Practical and even easier to use thanks to the new applicator.
- Antioxidant and moisturizing properties.
- Helps stimulate the production of hyaluronic acid.



Hydrating LIPSTICK

4ML / 0.13 FL. OZ.

Enhances the lips with a touch of sensual and sophisticated color. The exclusive formulation, enriched with Irwinol (wild Mango butter), provides lasting hydration. With UV SPF 15 sun protection, it safeguards the lips from harmful sun exposure. **Dermatologically tested, Nickel tested.**

HOW TO USE: To achieve a flawless application, ensure that the lipstick is evenly spread across the lips, avoiding any unsightly buildup, especially at the corners of the mouth. For continuous hydration and lip protection, reapply several times throughout the day.

KEY INGREDIENTS.
UV sun filters and Irwinol (wild Mango butter).

AVAILABLE IN 4 NUANCES:

-  LS1 - Sweet pink
-  LS2 - Wild Pink
-  LS3 - Coral
-  LS6 - Honey



WET MATT LIQUID LIPSTICK

9ML / 0.3 FL. OZ.

With its rich formulation, it delivers a flawless matte finish, never drying out, while enhancing the color with a radiant glow. Its luxurious and velvety texture doesn't stick, ensuring coverage and excellent staying power, leaving the lips plump, glossy, smooth, and enveloped in comfort. The innovative brush applicator ensures a perfect application. **Dermatologically tested, Nickel tested.**

HOW TO USE: To achieve a flawless application, ensure that the lipstick is evenly spread across the lips, avoiding any unsightly buildup, especially at the corners of the mouth. For continuous hydration and lip protection, reapply several times throughout the day.

KEY INGREDIENTS.
Shea Butter, Tsubaki Oil (Japanese Camellia Oil), Antioxidant Vitamin Mix of A, C, E.

AVAILABLE IN 3 NUANCES:

-  WM1 - Pure Red
-  WM2 - Pink Bouquet
-  WM3 - Hot Fuchsia



locherber®
SKINCARE



*** Confidential material for the point of sale, do not disclose to third parties ***

*** Confidential material for the point of sale, do not disclose to third parties ***



locherber®
SKINCARE

CONTENT MADE
IN SWITZERLAND

LOCHERBERSKINCARE.COM

*** Confidential material for the point of sale, do not disclose to third parties ***

*** Confidential material for the point of sale, do not disclose to third parties ***

